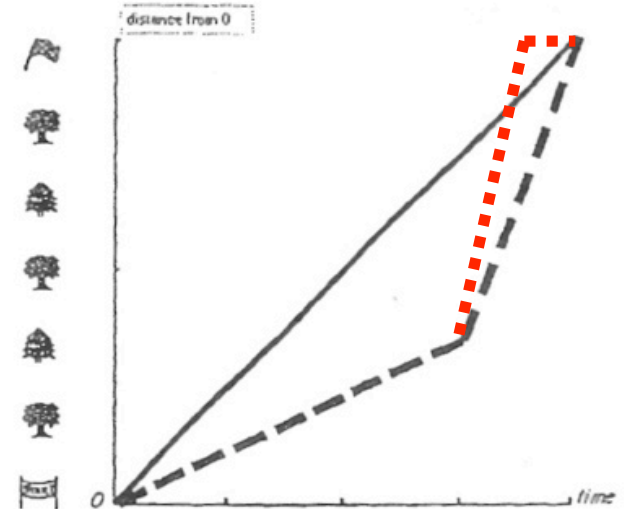


Graph Mistakes

Story 1

The Hare decides to take it easy during the early part of the race, and runs even slower than the Tortoise. Later, the Hare speeds up and wins the race.

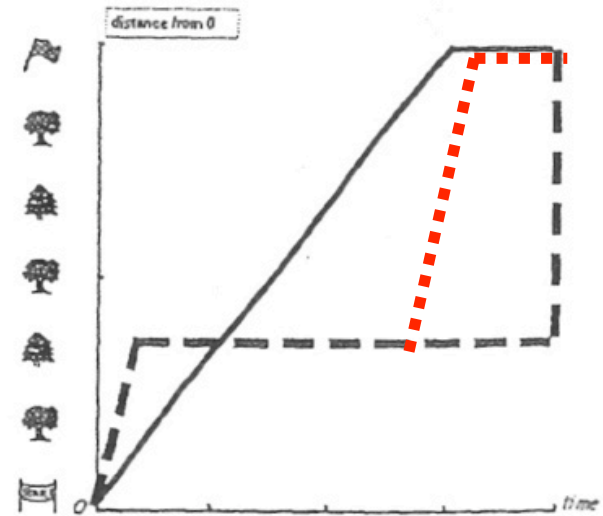
Editor's Comments



Story 2

The Hare zooms into the lead at the beginning of the race, then decides to take a nap. When he wakes up, he zooms to the finish line, but it is too late. The Tortoise has already won the race.

Editor's Comments

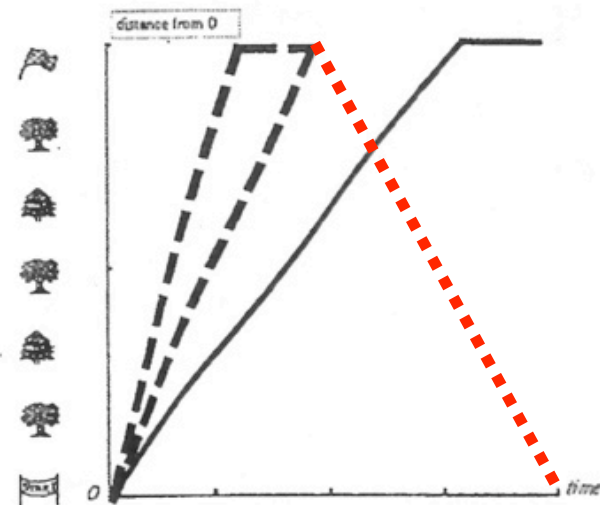


Graph Mistakes

Story 3

The Hare zooms to the finish line. When he gets there, the Tortoise still hasn't even reached the fourth tree. The Hare decides to show off and zooms right back to the starting line.

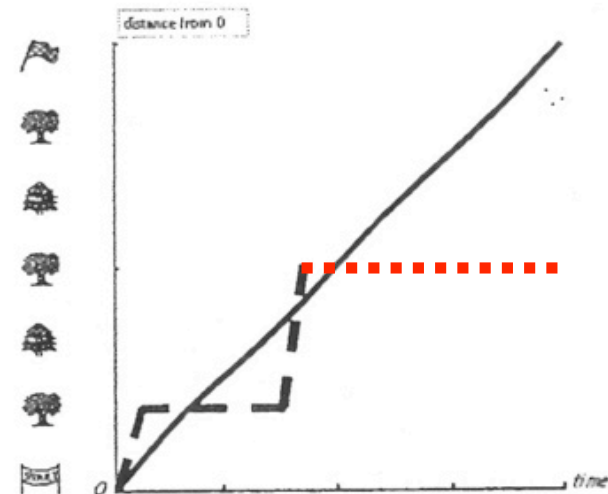
Editor's Comments



Story 4

The Hare zooms to the first tree and stops for a short nap. Then he zooms to the third tree and stops for another nap, but this time, he doesn't wake up.

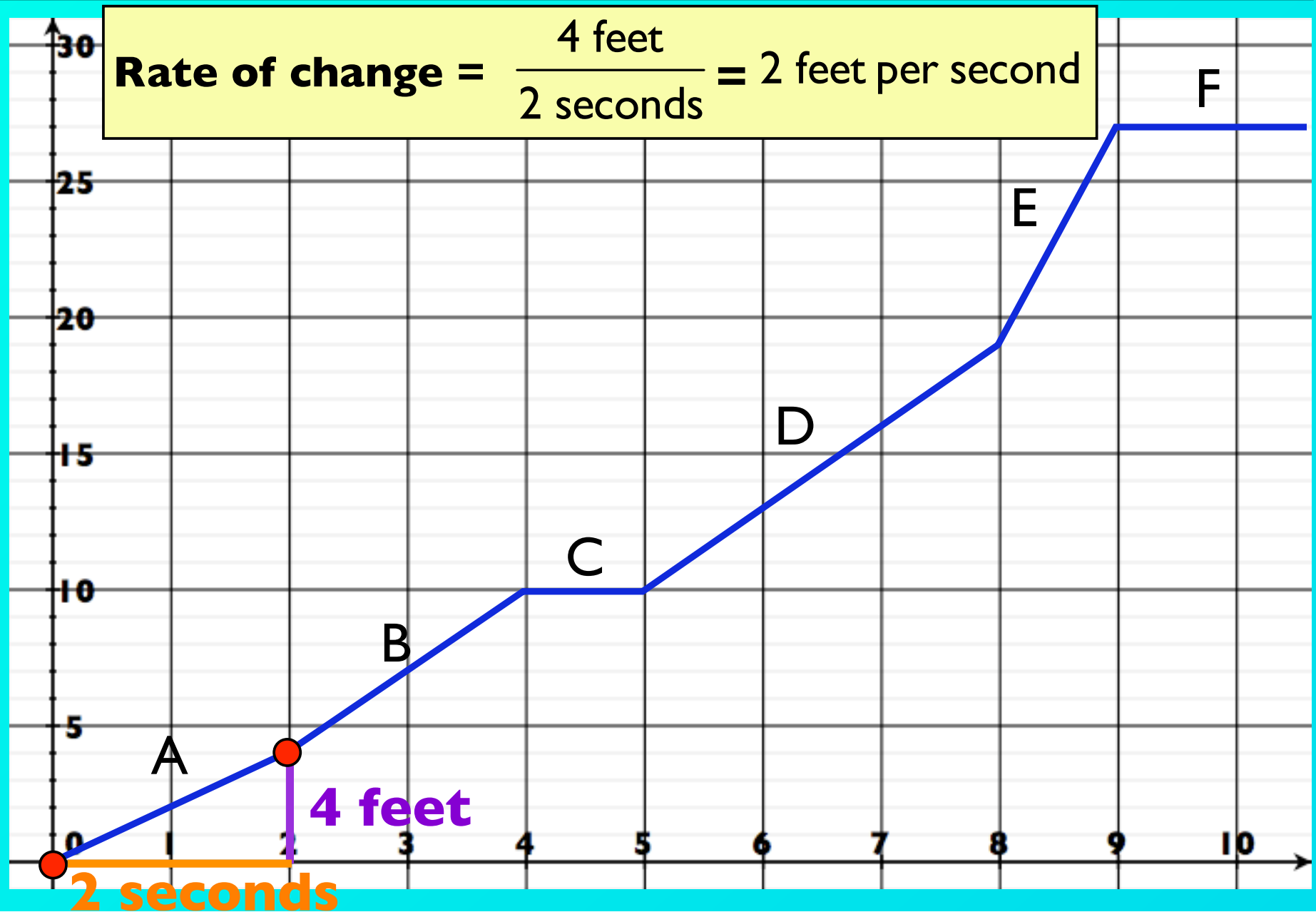
Editor's Comments



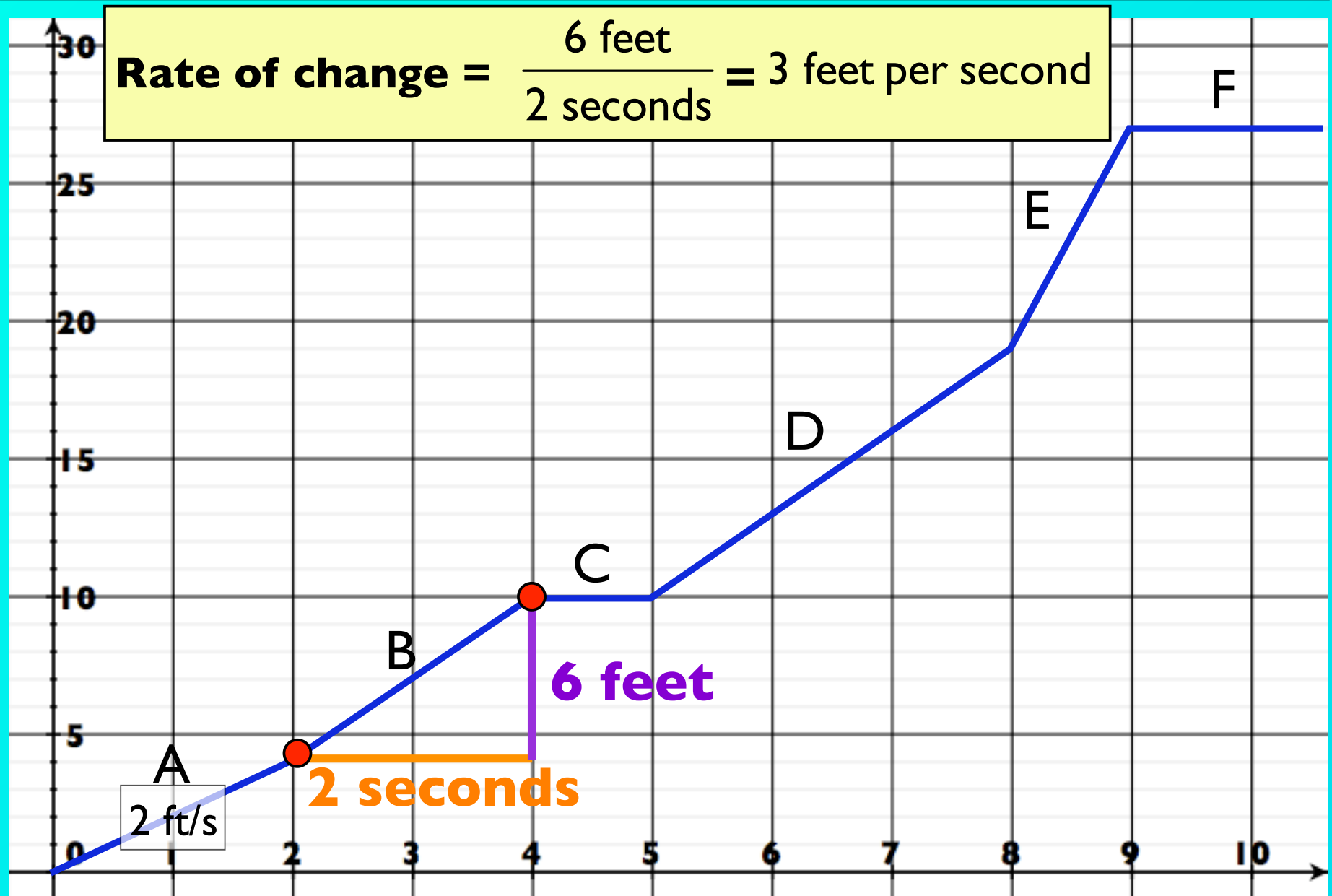
Main Concept

Rate of Change of a Graph

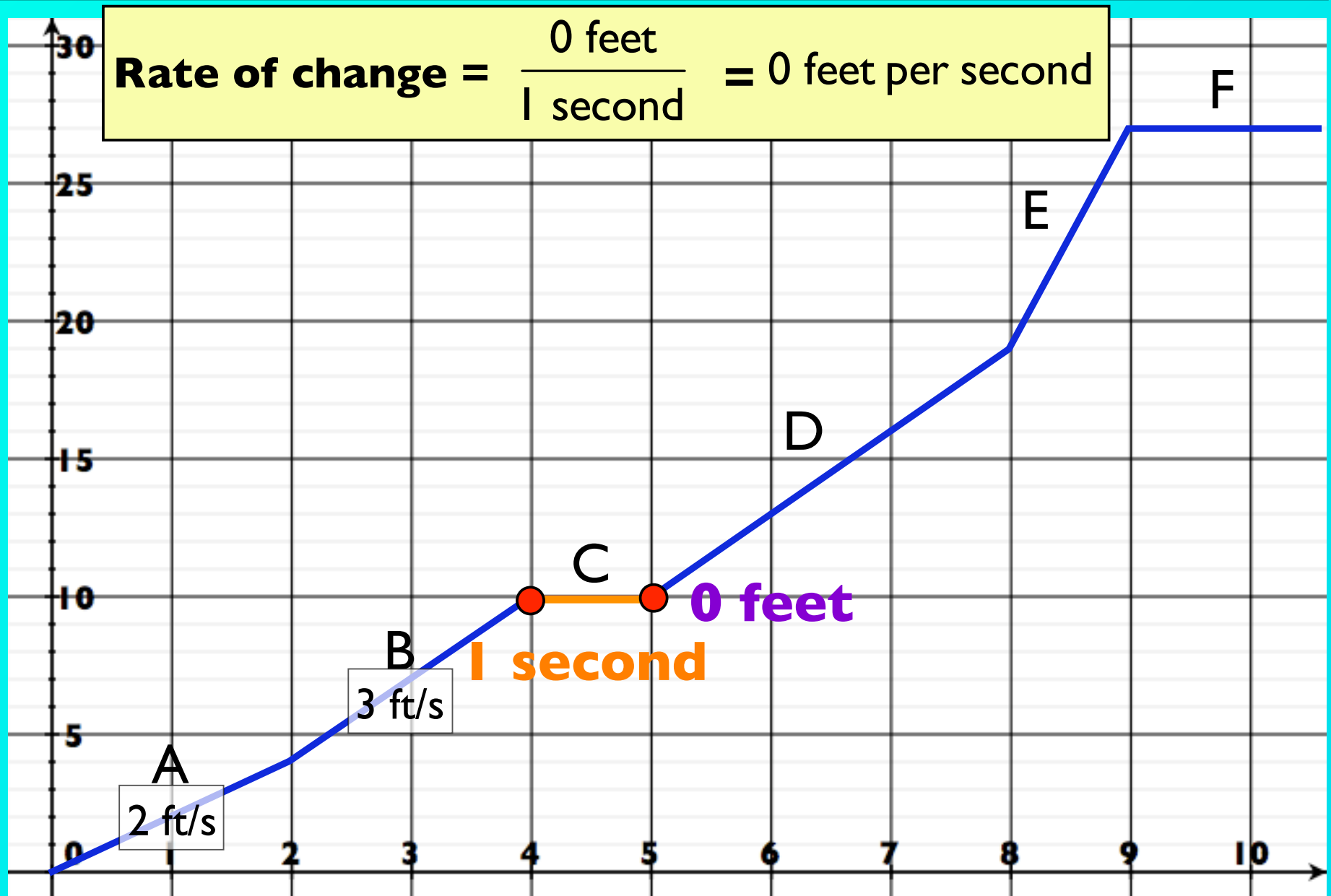
When is the Hare running fastest?



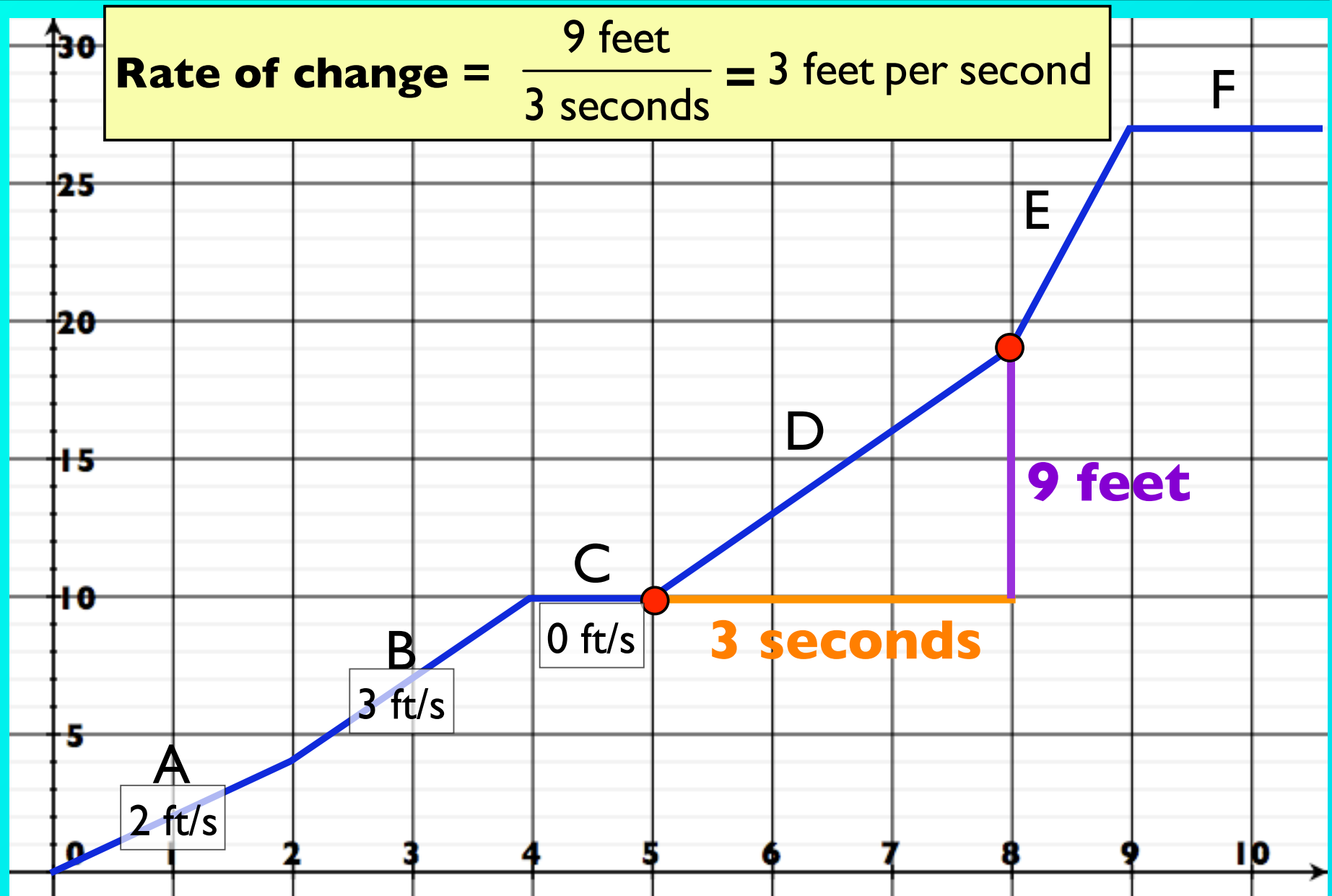
When is the Hare running fastest?



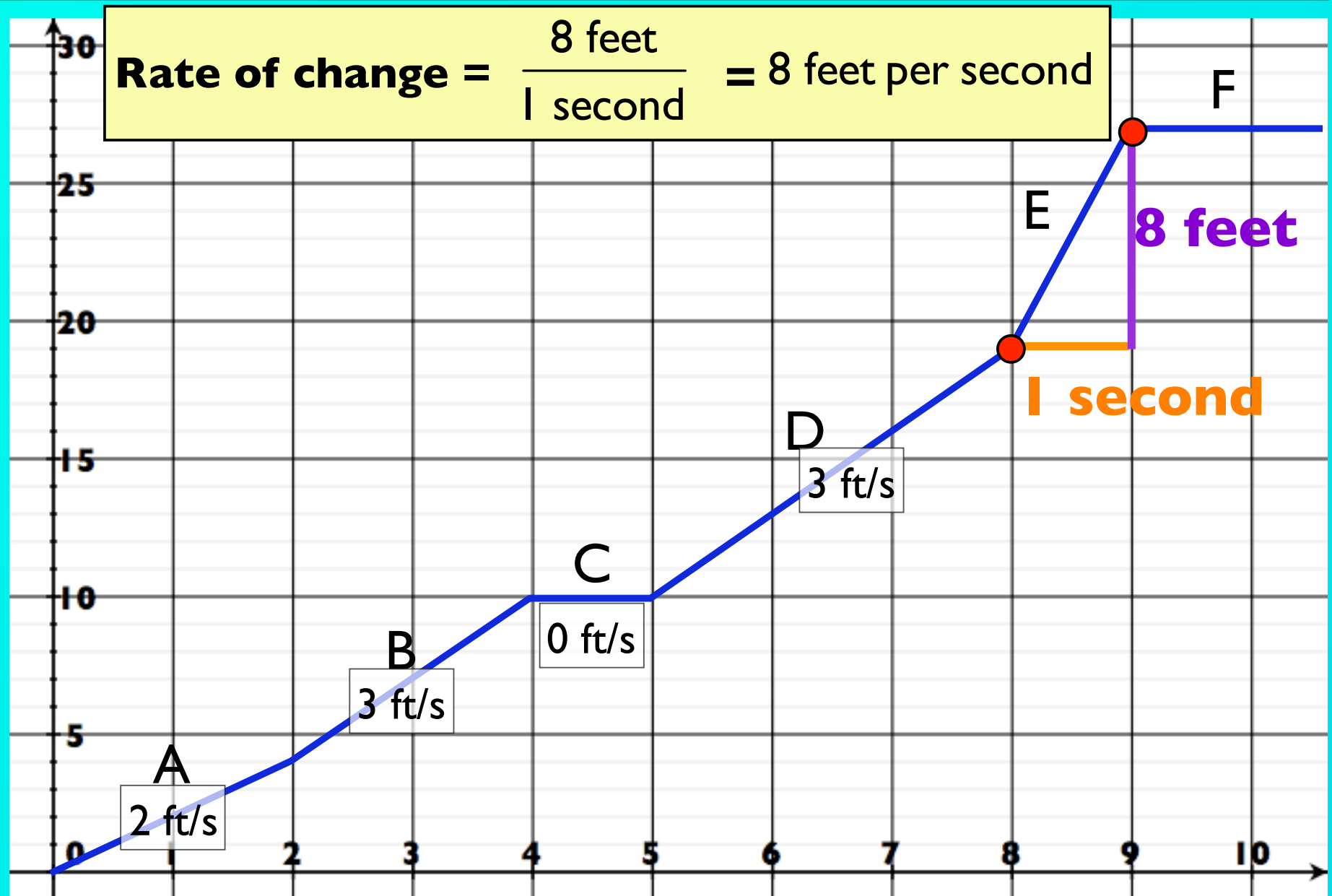
When is the Hare running fastest?



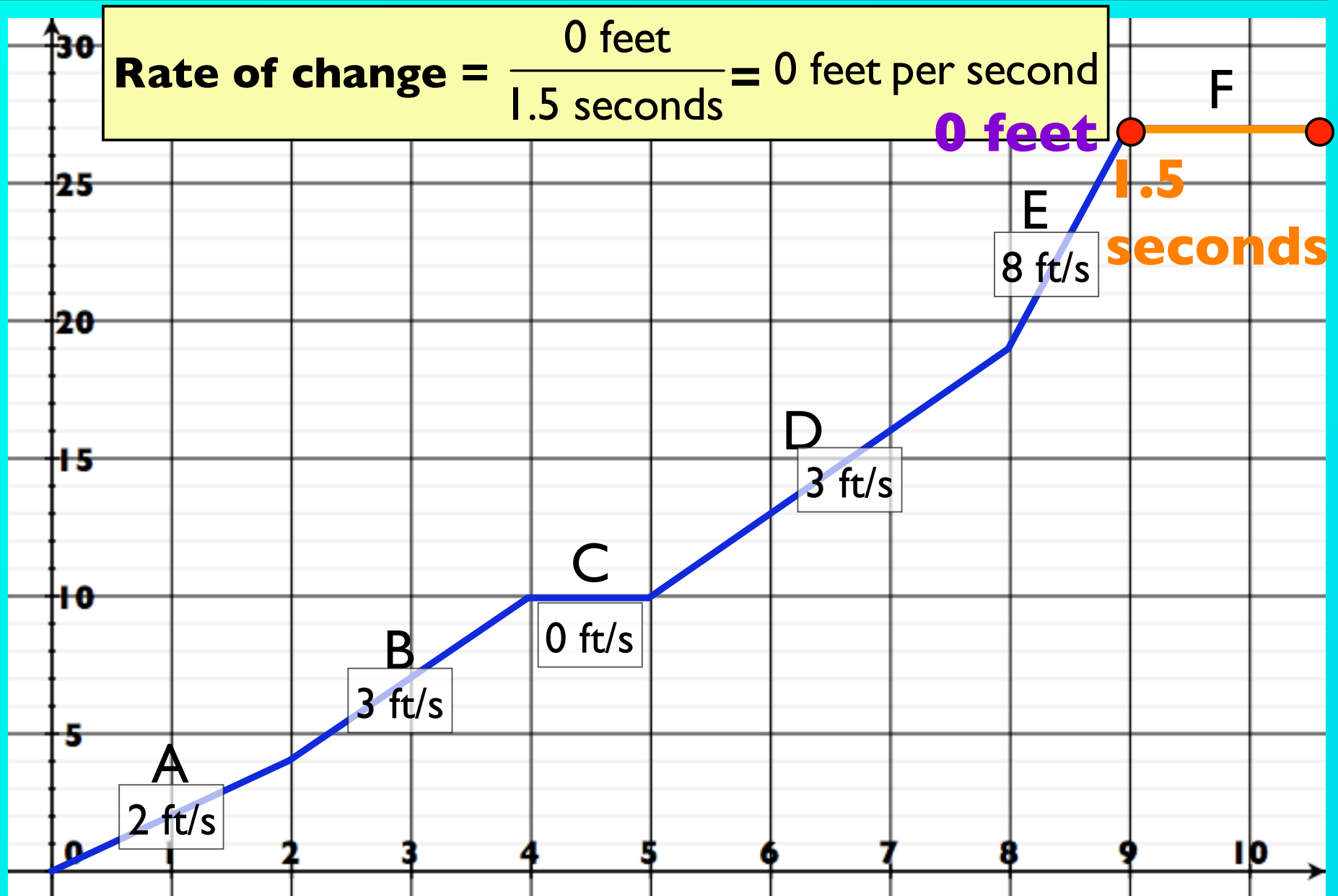
When is the Hare running fastest?



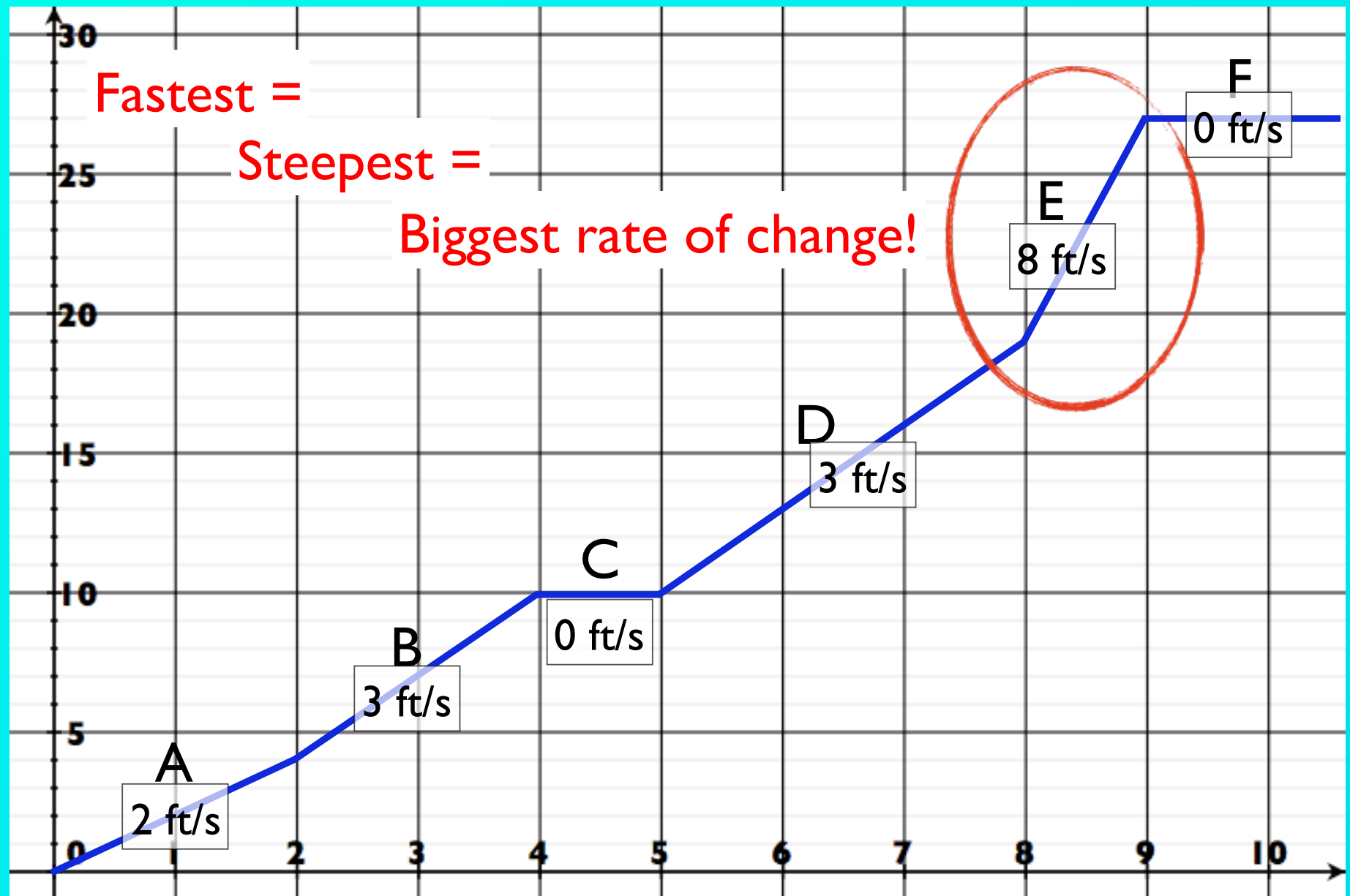
When is the Hare running fastest?



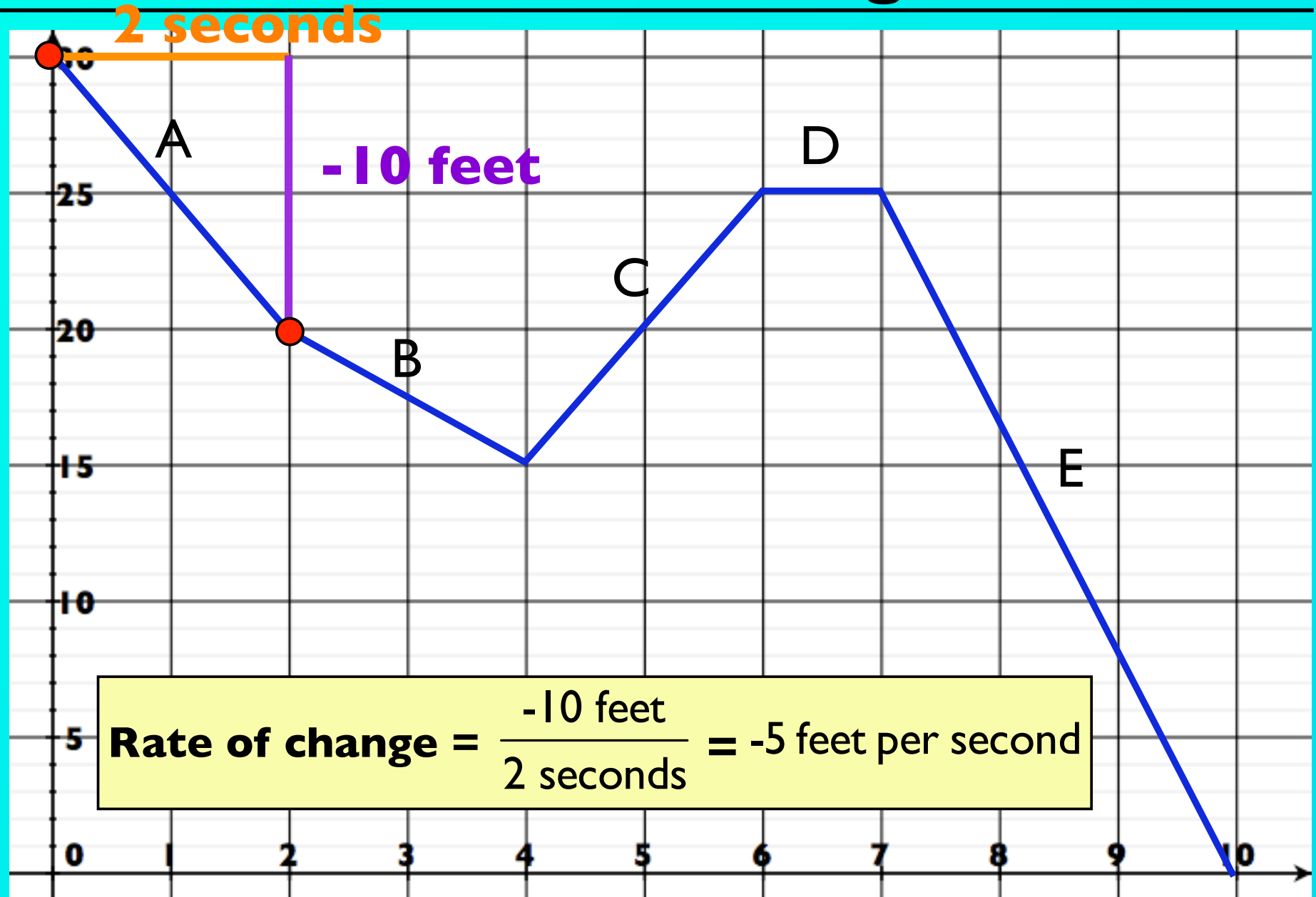
When is the Hare running fastest?



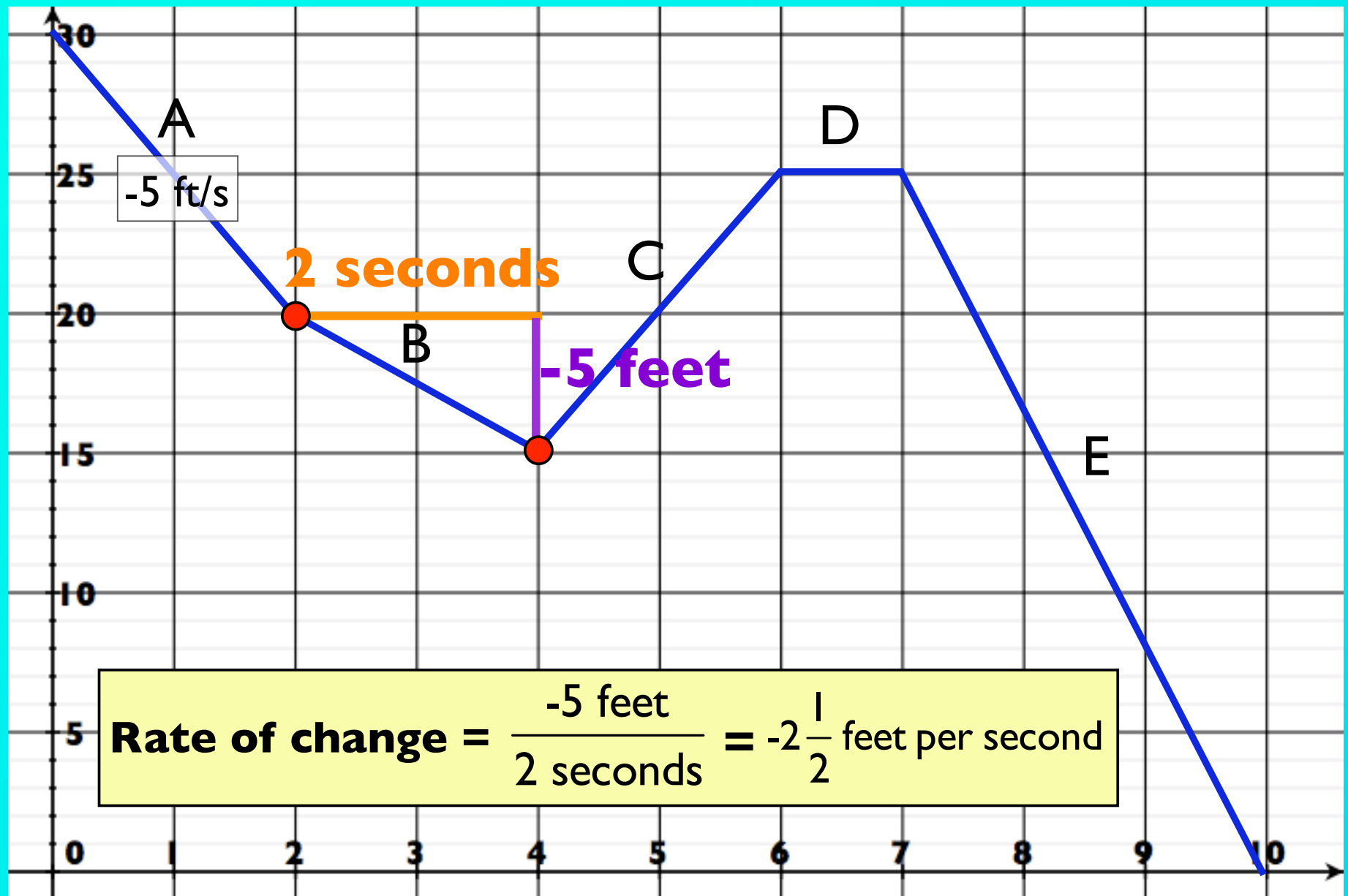
When is the Hare running fastest?



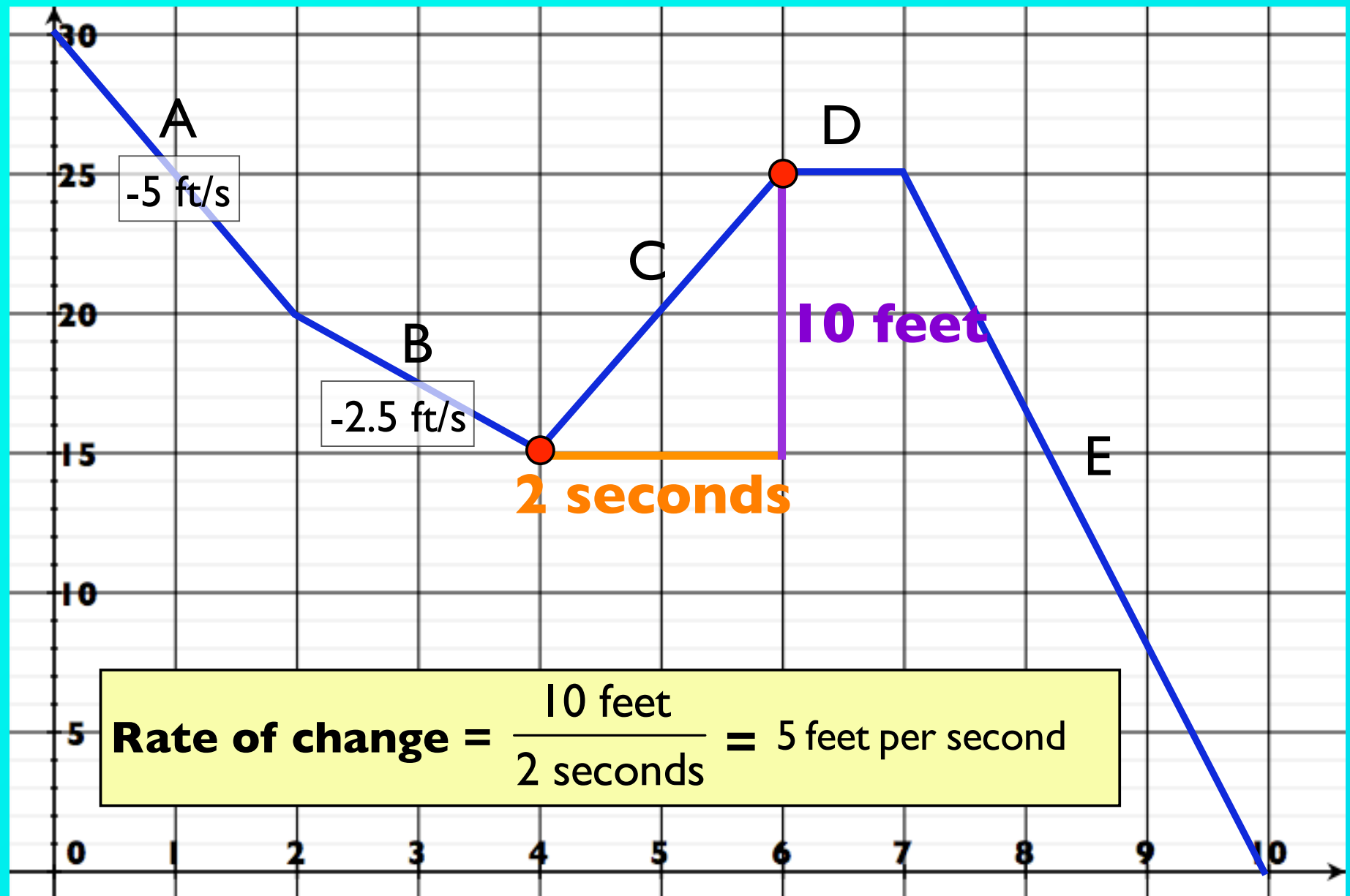
When is the Hare running fastest?



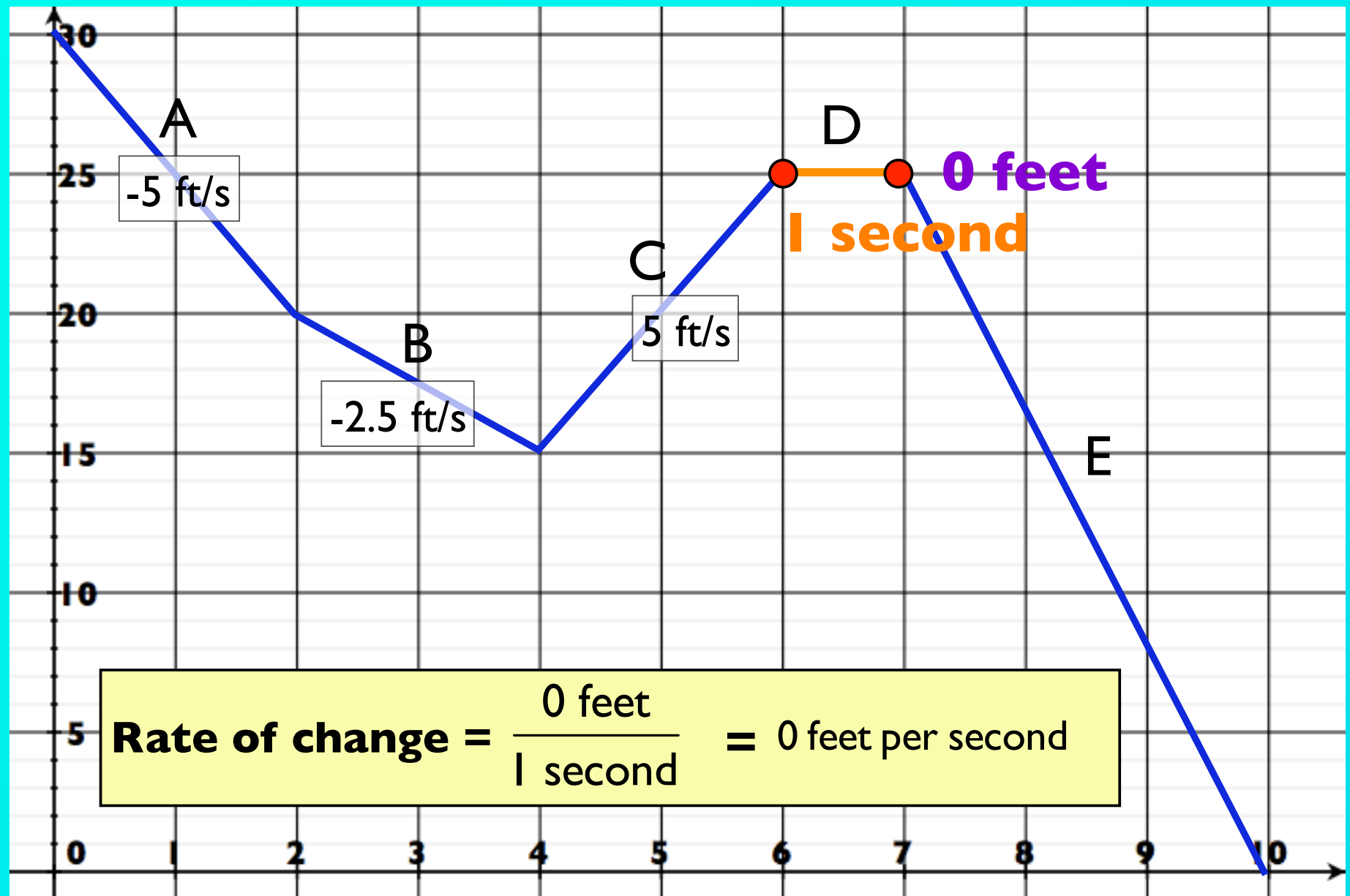
When is the Hare running fastest?



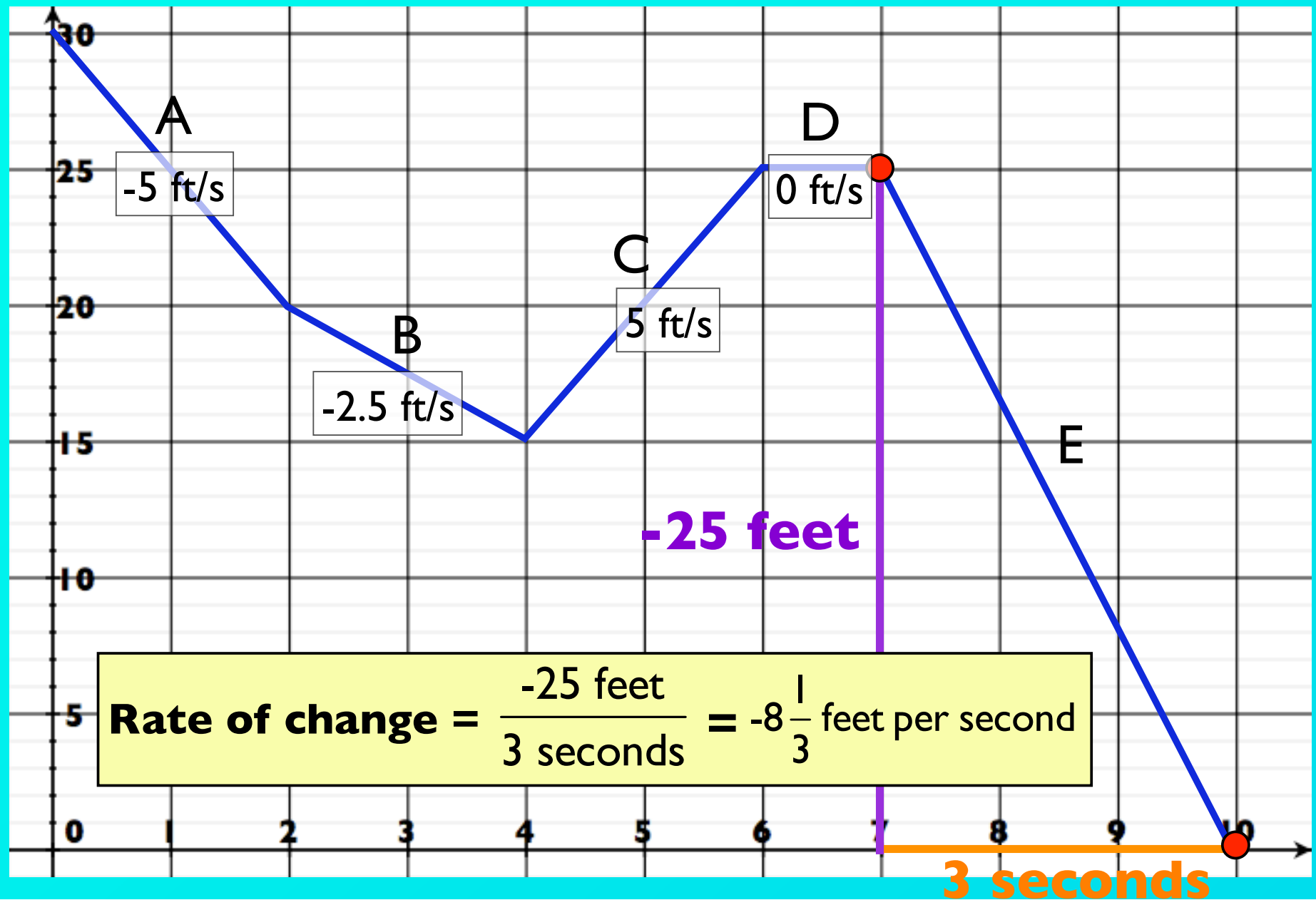
When is the Hare running fastest?



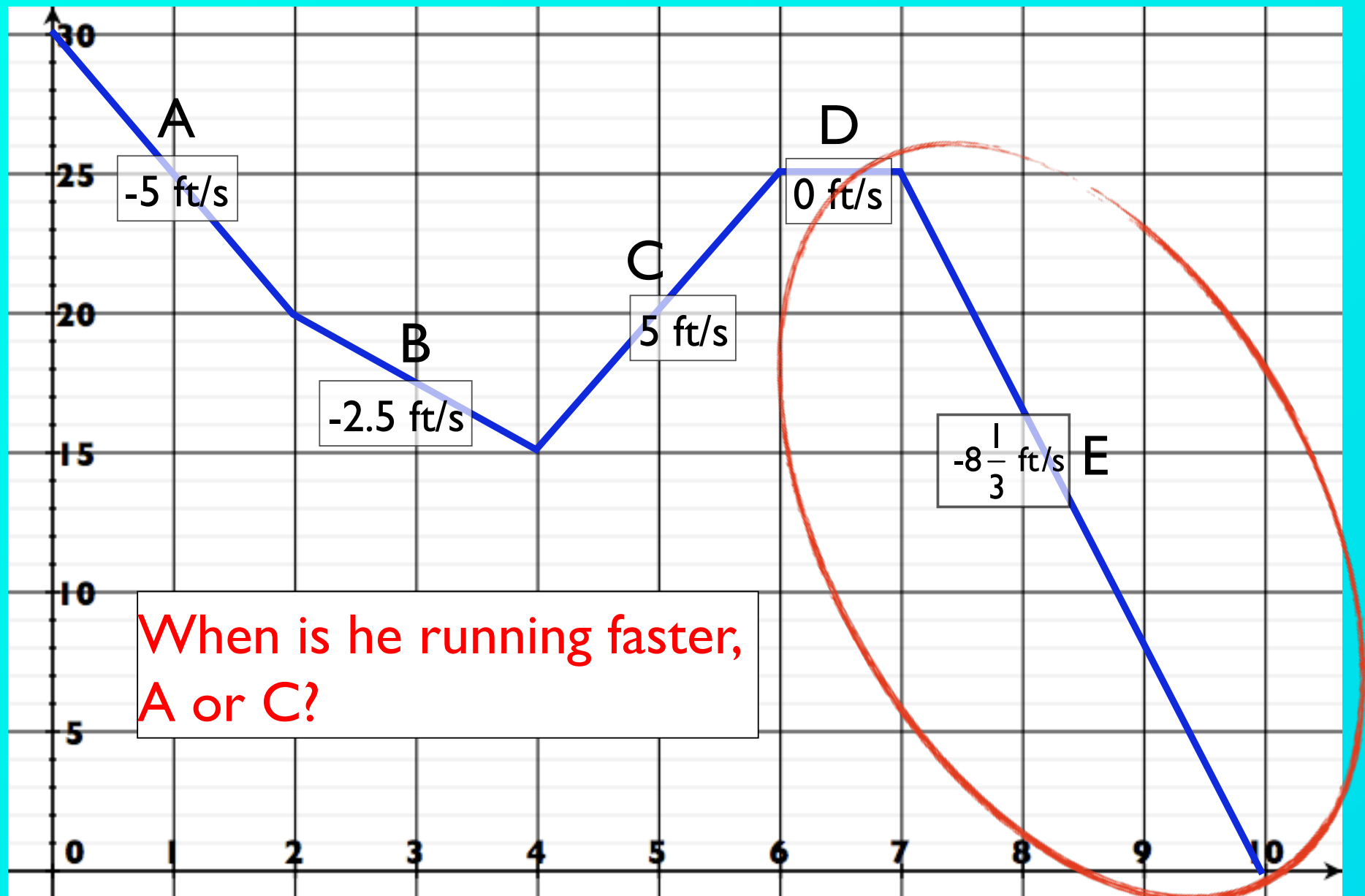
When is the Hare running fastest?



When is the Hare running fastest?



When is the Hare running fastest?



Summary

If the line is **steeper**, the rate of change is **bigger**.

The Hare is running faster.

If the line is **flat**, the rate of change is **zero**.

The Hare is not moving.

If the line is **going up**, the rate of change is **positive**.

The Hare is running toward the finish line.

If the line is **going down**, the rate of change is **negative**.

The Hare is running toward the starting line.